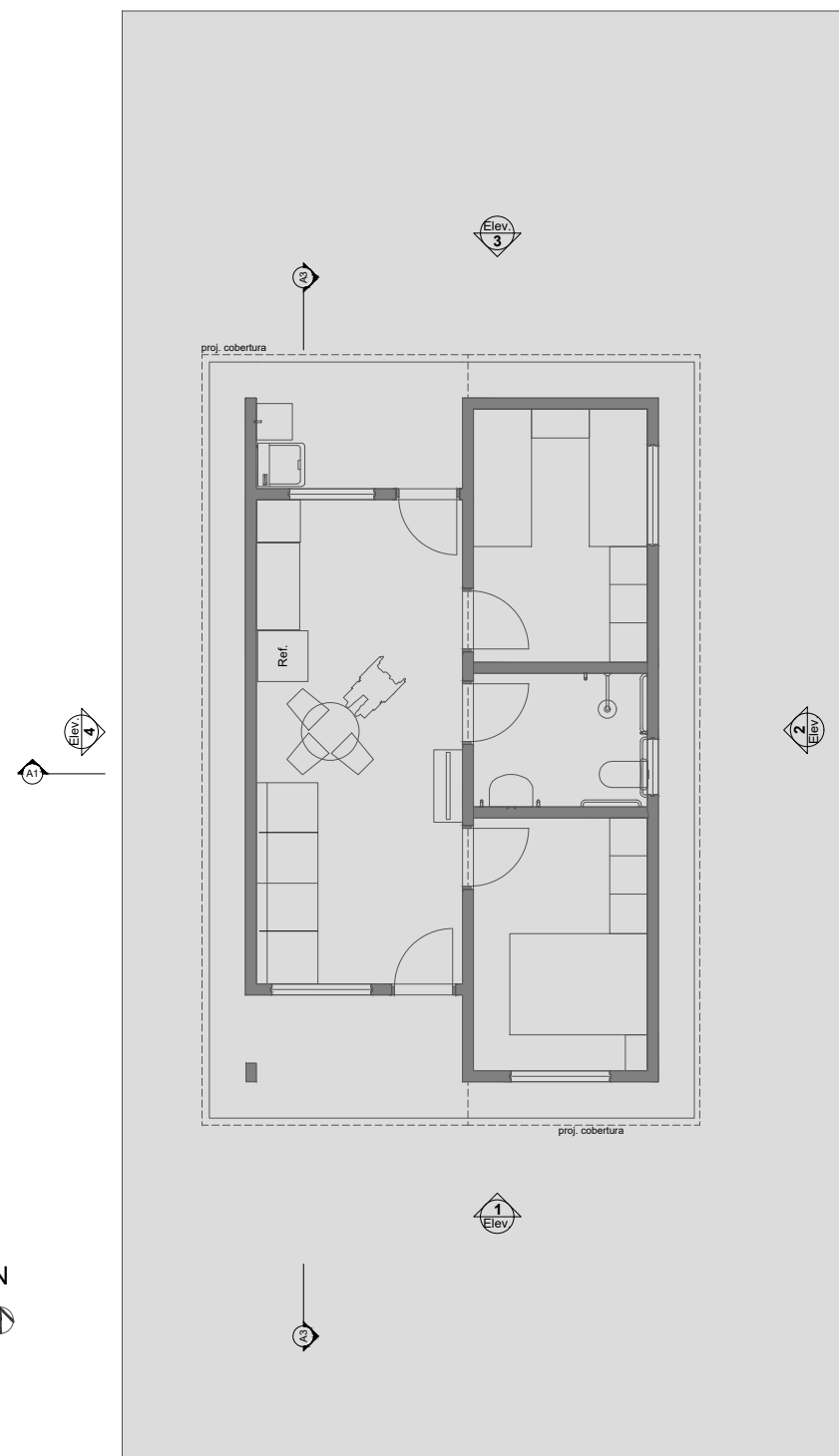
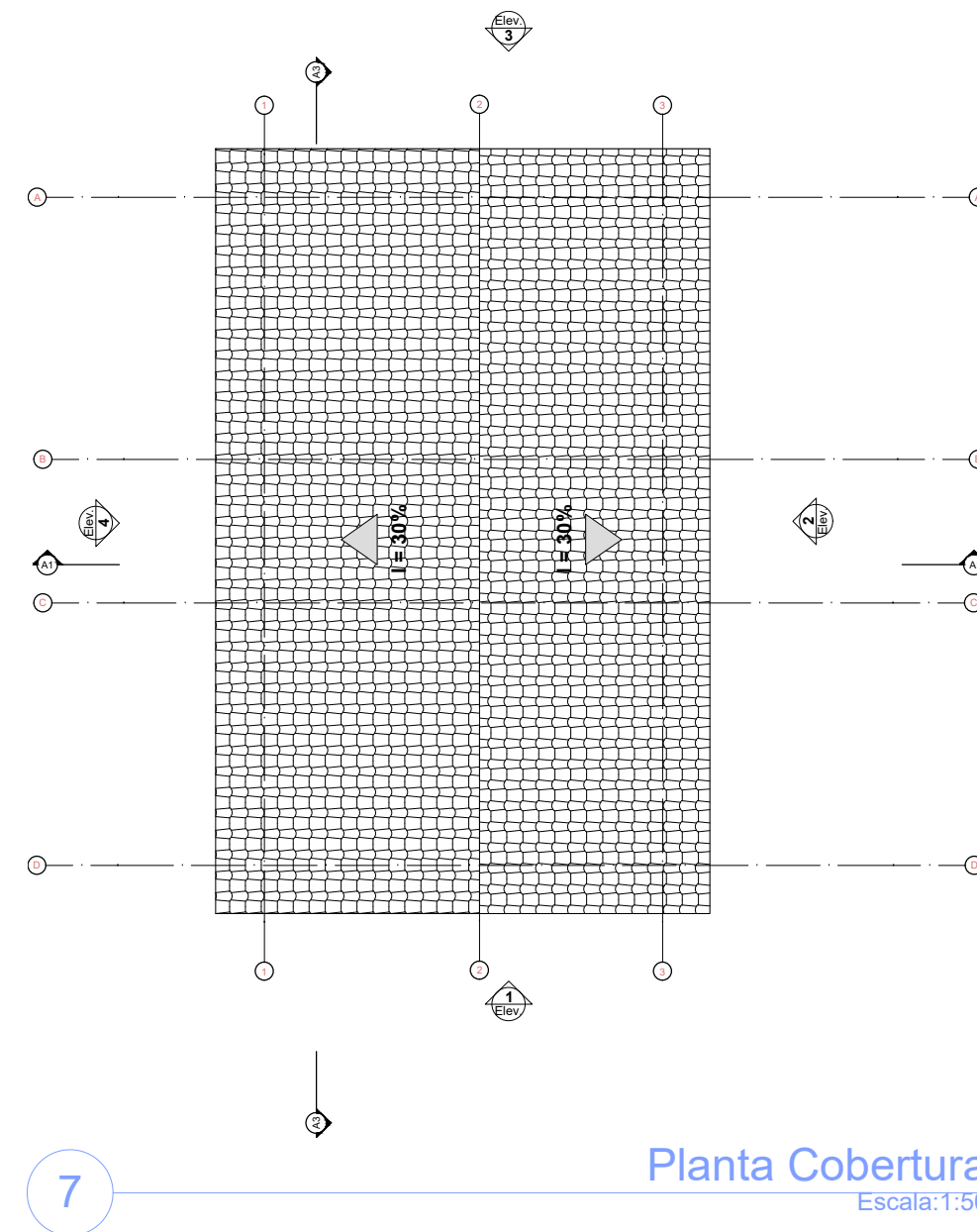


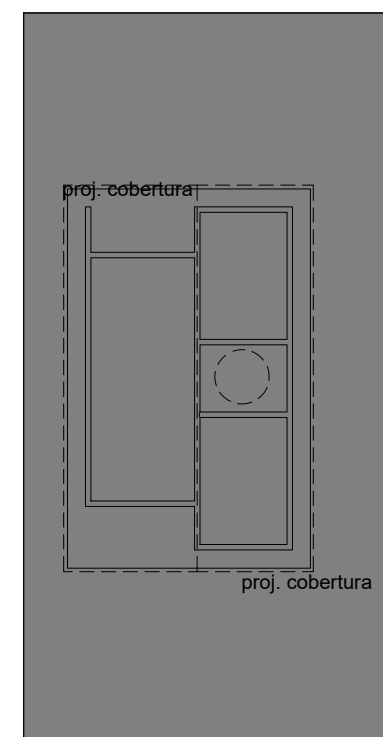
0 Planta Térreo
1:50



6 LAYOUT
1:100

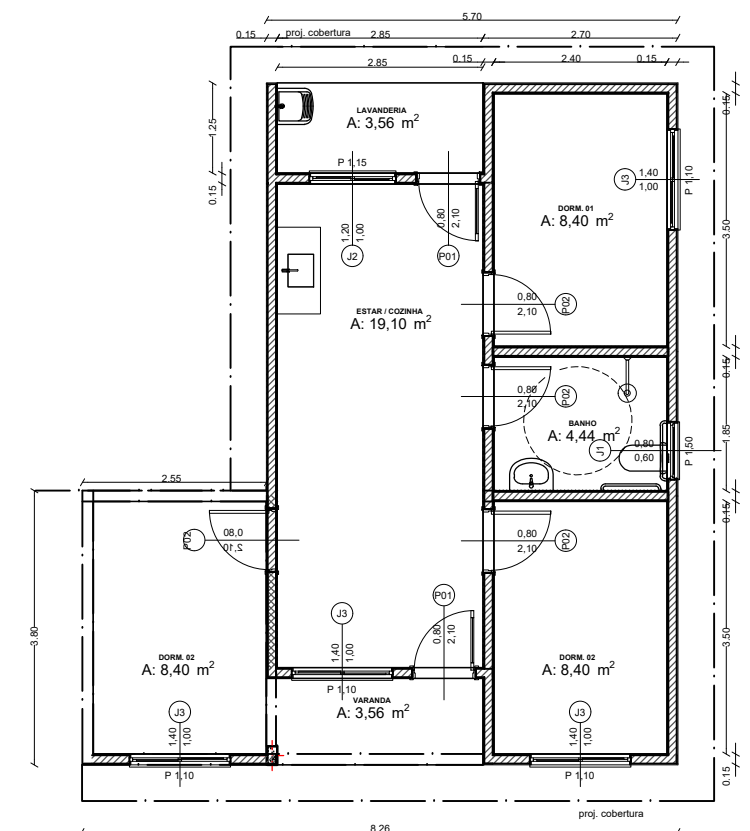


7 Planta Cobertura
Escala: 1:50

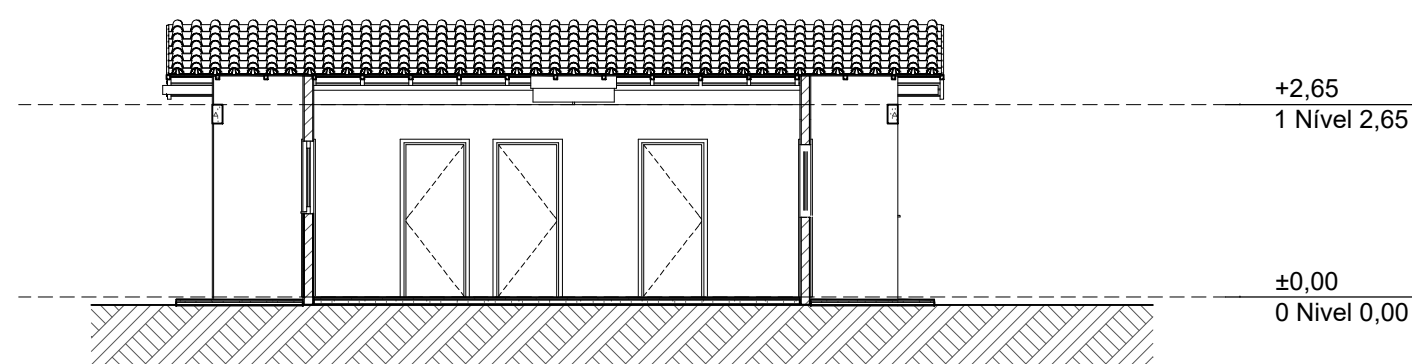


5 Implantação
Escala: 1:200

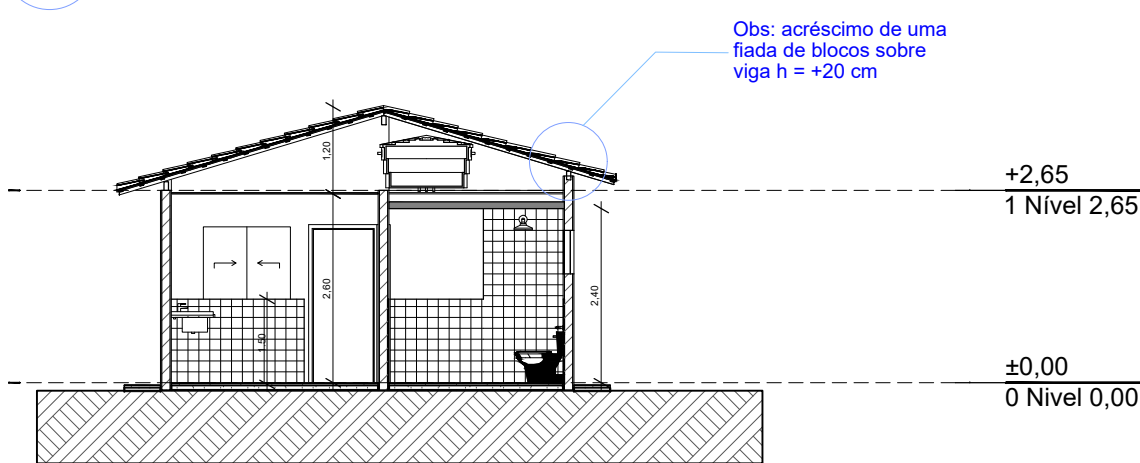
Quadro de Areas			
Piso de Origem		Cômodo	Área Medida
Nível 0,00	01	ESTAR / COZINHA	19,10
	02	DORM. 01	8,40
	03	BANHO	4,44
	04	DORM. 02	8,40
	05	VARANDA	3,56
	06	LAVANDERIA	3,56
			47,46 m²



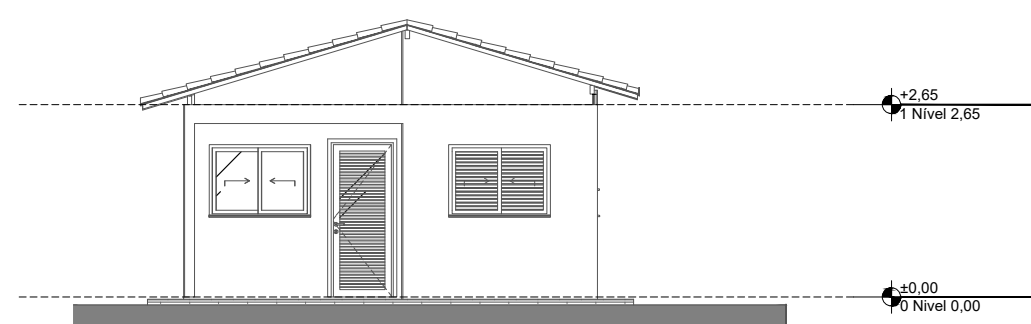
8 Planta de Ampliação
Escala: 1:100



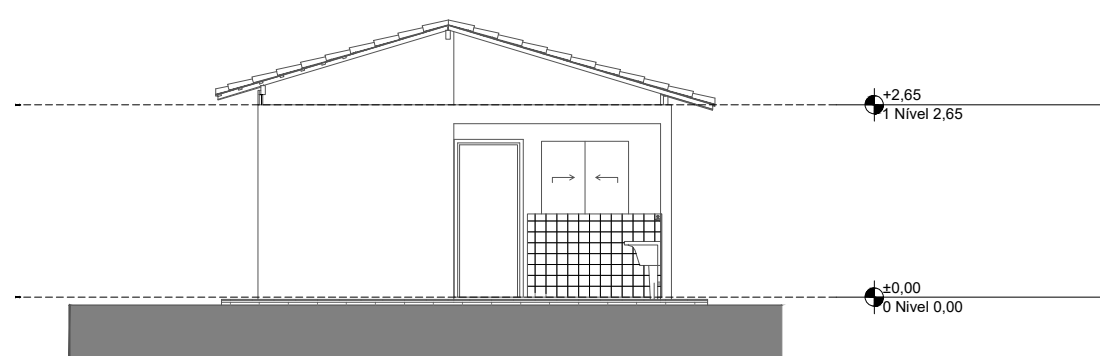
A3 Corte
1:100



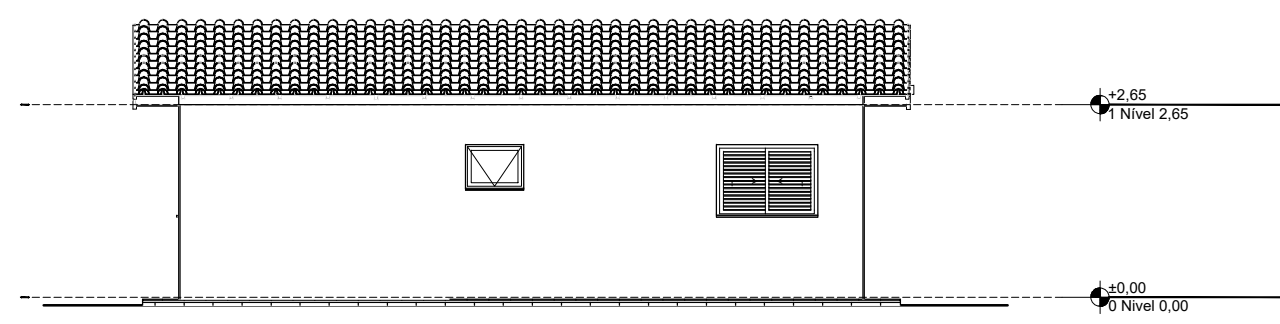
A1 Corte
1:100



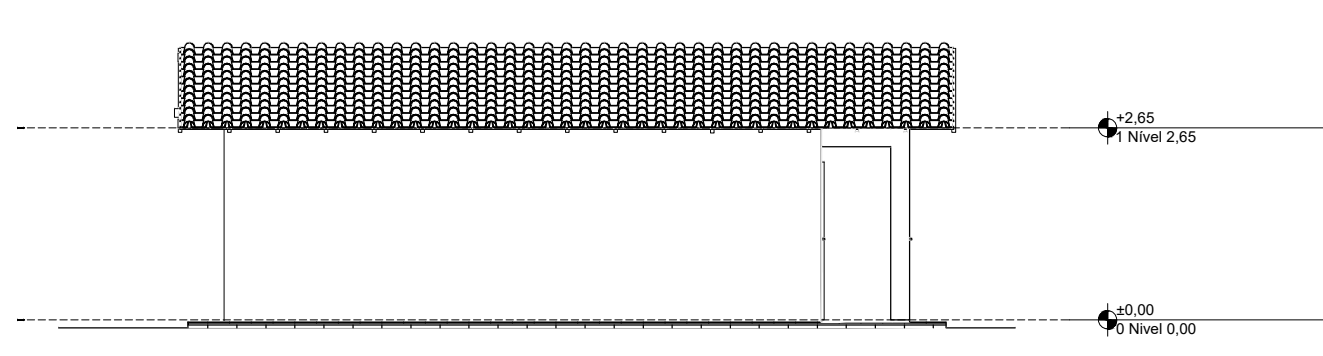
1 Elevação Frontal
1:100




3 Elevação Posterior
1:100



2 Lateral Direita
1:100



4 Lateral Esquerda
1:100

 PREFEITURA MUNICIPAL DE ITACAMBIRA/MG		
OBRA/SERVIÇO: FNHIS SUB-50		
PROPRIETÁRIO: PREFEITURA MUNICIPAL DE ITACAMBIRA/MG CNPJ: 18.017.400/0001-75		
GERALDO MOISÉS DE SOUZA PREFEITO MUNICIPAL		
ENDEREÇO: RUA PROJETADA 1,2 E 3 VILA DO CRUZEIRO- ITACAMBIRA MG COORDENAS GEOMÉTRICA -17.059546 -43.303413		
PROJETO: PROJETO ARQUITETÔNICO		
RESPONSÁVEL TÉCNICO: PEDRO HENRIQUE FERREIRA SANTOS ENGº CIVIL - CREA/MG: 252.433/D		
CONJUNTO HABITACIONAL COMPOSTA DE 25 UNIDADES HABITACIONAL		ART Nº: PROPOSTA Nº:
DATA: DEZEMBRO/2025	ESCALA: INDICADA	